

Installation instructions

安装说明书



Suitable for use with similar products / 适于用同类产品

Moisture-proof lamps / 防潮灯

Installation Guide / 安全指引

The appliance should be installed, connected and tested by qualified electrician, and in accordance with local regulations. 电器应由合格的电工安装、连接和测试，并符合当地法规。

Turn off the power supply before installation or maintenance of the appliance, and make sure that the cables will not be squeezed or damaged by sharp edges. 在安装或维护设备之前，请关闭电源，并确保电缆不会被锋利的边缘挤压或损坏。

在安装或维护设备之前，请关闭电源，并确保电缆不会被锋利的边缘挤压或损坏。

Ensure that LED lighting fixtures do not come into contact with corrosive chemicals, solvents, or abrasive cleaners. 确保 LED 灯具不会接触到腐蚀性化学物质、溶剂或研磨清洁剂等。

To avoid injury or damage to the lighting fixtures, please ensure that the power cord and lighting fixtures are securely installed before connecting the power supply. 为避免受伤或损坏灯具，请在连接电源前确保电源线和灯具安装牢固。

WARNING / 警告

LED lighting fixtures are low voltage distribution. Before connecting the 220V power supply, please ensure that the device is correctly connected to the driver. Otherwise, it will damage the equipment. After activation, hot swapping is not allowed in the drive.

LED 灯具为低压配电。在连接 220V 电源之前，请确保设备已正确连接到驱动器。否则，会损坏设备。开启后，驱动器中不允许热插拔。

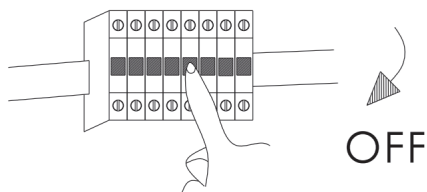
Before any maintenance, adjustment, or cleaning of the lighting fixtures, always ensure that the power is turned off and the LED fixtures have cooled down. Electrical appliances can be cleaned with a soft cloth and standard pH neutral detergent.

在对灯具进行任何维护、调整或清洁之前，始终确保电源已关闭，LED 灯具已冷却。可用软布和标准 PH 中性洗涤剂清洁电器。

Electrical appliances should not be covered with insulation blankets or similar materials. Otherwise, it is easy to cause fire accidents.

电器不应被隔热毯或类似材料覆盖。否则易造成火灾故障。

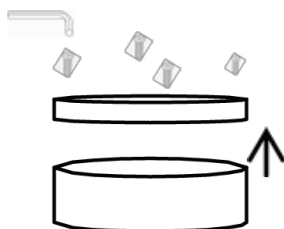
- 1 Turn off the switch.
关闭开关。



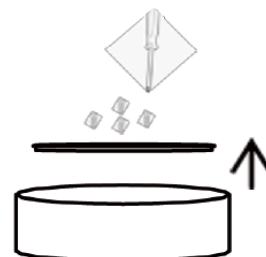
- 2 Take out the lamp and accessory kit from the box.
从盒子里取出灯和配件包。



- 3 Unscrew the safety screws and remove the cover.
拧下安全螺钉并取下盖子。



- 4 Remove the LED board, driver, and terminal block located on the back of the board. Grasp the edge of the LED board to avoid damaging it.
卸下 LED 板、驱动器和位于板背面的端子块。握住 LED 板的边缘，以免损坏 LED 板。



Installation instructions

安装说明书



Suitable for use with similar products / 适于用同类产品

Moisture-proof lamps / 防潮灯

5

Install the casing on the wall or ceiling, tighten the screws, ensure that all screw points and cable entry holes are sealed with the rubber plugs we provide to maintain the IP rating, and connect the AC cable to the terminal block.

将外壳安装在墙上或天花板上，拧紧螺钉，确保所有螺钉点和电缆引入孔都用我们提供的橡胶塞密封，以保持 IP 等级，并将交流电缆连接到接线板。

灵活的安装选项

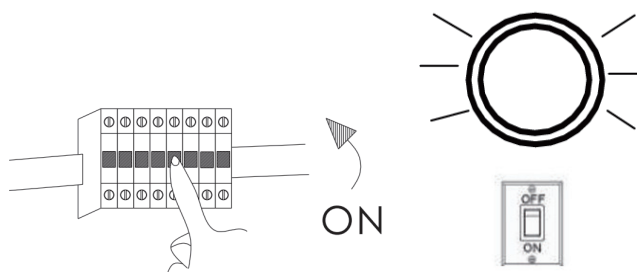
Flexible Mounting Options



6

Reconnect the LED board, select the desired color temperature for the switch, install the front lens cover, and ensure that the rubber seal is securely fastened in place with safety screws. Now you can turn on the light.

重新连接 LED 板，选择开关所需的色温，安装前透镜盖，确保橡胶密封件用安全螺钉固定到位。现在你可以开灯了。



precautions / 注意事项

The protection level of this product is IP66, suitable for humid environments, but all holes and cable entry points must be sealed with neutral cured silicone to maintain the IP rating of this product.

本产品的防护等级为 IP66，适用于潮湿环境，但所有孔、电缆入口点必须用中性固化硅胶密封，以保持本产品的 IP 等级。

Product Features / 产品特点

This product can be used for ceiling installation and also for wall and facade installation.

本产品可用于天花吸顶安装，也可以用于墙壁立面安装。



surface mounted.

吸顶安装



Facade installation

立面安装